

General Specifications

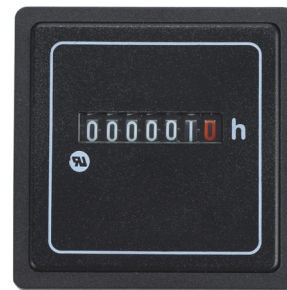
Y Series AC and DC Hour Meters Round or Square Case Styles

The Y Series hour meters are designed to monitor operating time, warranty periods and maintenance intervals on electrically driven machines and devices. Examples are business machines, compressors, power drives, generators, battery operated vehicles, electric furnaces, refrigeration equipment, farm and industrial machinery. In many cases, the operating environment is quite harsh. The Y Series hour meters offer a high degree of protection against dust and moisture and wide operating temperature range.

The measurement range for AC meters is 0 to 99,999.99 hours and DC meters is 0 to 999,999.9 hours. They are not re-settable. Ordering information for both models with various mounting configurations and terminations is described below.



TR Series
(with 3 screw front mount)



TS Series
(with 52mm bezel)

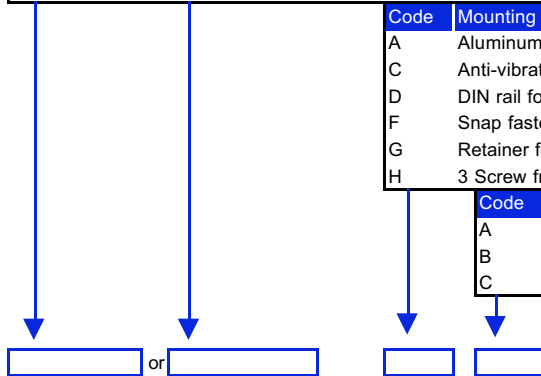
Ordering Information:

Square Model	Round Model	Input (voltage is +/- 10%)
TS-0246	TR-0246	24V-60Hz
TS-1206	TR-1206	120V-60Hz
TS-1205	TR-1205	120V-50Hz
TS-2306	TR-2306	230V-60Hz
TS-2305	TR-2305	230V-50Hz
TS-2406	TR-2406	240V-60Hz
TS-4005	TR-4005	400V-50Hz
TS-0630	TR-0630	6-30VDC
TS-1080	TR-1080	10-80VDC
TS-1100	TR-1100	110VDC

Code	Mounting Configuration
A	Aluminum Clamp
C	Anti-vibration boot & clamp
D	DIN rail for TS only
F	Snap fastener for TS only
G	Retainer for TS only
H	3 Screw front mounting, TR only

Code	Electrical input terminals
A	Combination pin and screw terminals
B	Flat pin terminals
C	Screw terminals for TS only

Optional Bezels for TS Model	
M1106QE-A	(52mm x 52mm)
M1106QF-A	(55mm x 55mm)
M1106QG-A	(72mm x 72mm)



Ordering example: TS-1206AA is a 120V-60Hz hour meter with square face, aluminum clamp and combination terminals. The combination pin and screw or flat pin terminals can be used with 1/4" quick connect lugs.

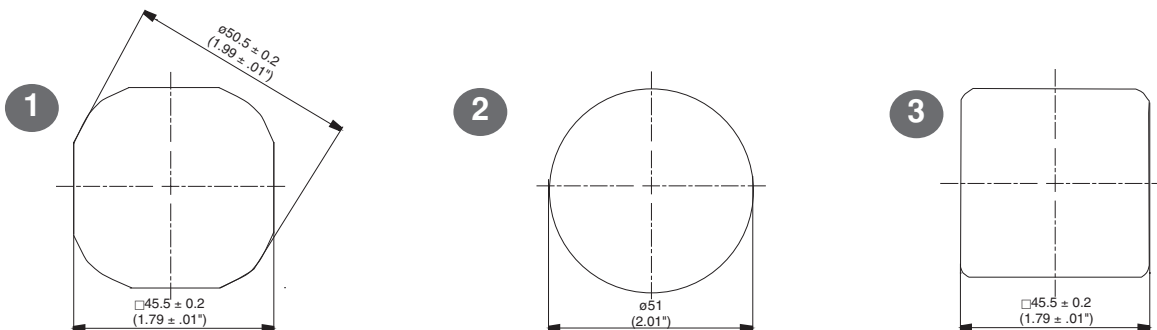
For technical information, outline dimensions and panel cutouts see following pages.

Technical Data for Y Series Hour Meters

Specification	AC Hour Meters	DC Hour Meters
Operating voltage	24V, 120V, 230V, 240V, 400V (± 10%)	6-30V, 10-80V, 110V (± 10%)
Mains frequency	60 Hz and 50Hz models	DC
Power consumption	max 8mA	max 9mA
Operating temp. range	-13°F...+176°F (-25°C...+80°C)	-4°F...+158°F (-20°C...+70°C)
Storage temp. range	-40°F...+176°F (-40°C...+80°C)	-13°F...+158°F (-25°C...+70°C)
Environmental specif.	77...131°F (25...55°C), 95% relative humidity, 6 cycles IEC 68-2-30	
Vibration	50m/s ² , 10...150Hz IEC 68-2-6	
Shock	490m/s ² , 11ms IEC 68-2-27	
Accuracy	± 0.02%	± 0.002%
Reading accuracy	1/100 hour (36sec)	1/10 hour (6min)
Lifetime	min 99999 hours	
Weight	app. 50g(1.76oz)	app. 52g(1.83oz)
Front dimensions	TR-58mm (2.28" Diameter), TS-48x48mm (1.89"x1.89")	
Cutout dimension	TR-50mm (1.97" Diameter), TS-45.5x45.5mm (1.79"x1.79")	
Counting range	99,999.99 hours	999,999.9 hours
Count before shipping	00001.00 hours	000001.0 hours
Number of digits	5 integers, 2 decimals	6 integers, 1 decimal
Digit height	4mm (0.16")	
Digit color	integers:white decimals:red	
Wheel color	integers:black	
	decimals:white=60Hz, decimals:black=50Hz	decimals:black
Protection class	TR(round) IP67-front face, IP00-terminals TS(square) IP65-front face, IP20-terminals	
Housing color	black	
Face Plate	black with clear viewing lens, and printed "h"	
TS mounting options	A=aluminum clamp, G=Retainer, D=DIN rail, F=Snap fastener, C=antivibration rubber	
TR mounting options	A=aluminum clamp, C=anti-vibration rubber 80mm dia., H=3 screw mtg. on 64.3mm dia.	
TS bezels (optional)	52x52mm(2.05" sq), 55x55mm(2.17"sq), 72x72mm(2.83" sq)	
Connection	Flat Pin 6.3x0.8mm with screw terminal	
Standards	CE, UL Recognized	
Label on Meter	Part Number	
	Date Code yyddd 03020 (January 20, 2003)	
	Voltage and Frequency (ie.120V 60Hz)	Voltage and Frequency (ie.10-80V DC)
	Power consumed (ie.8mA)	Power consumed (ie.9mA)
	Appropriate UL file number and symbol	

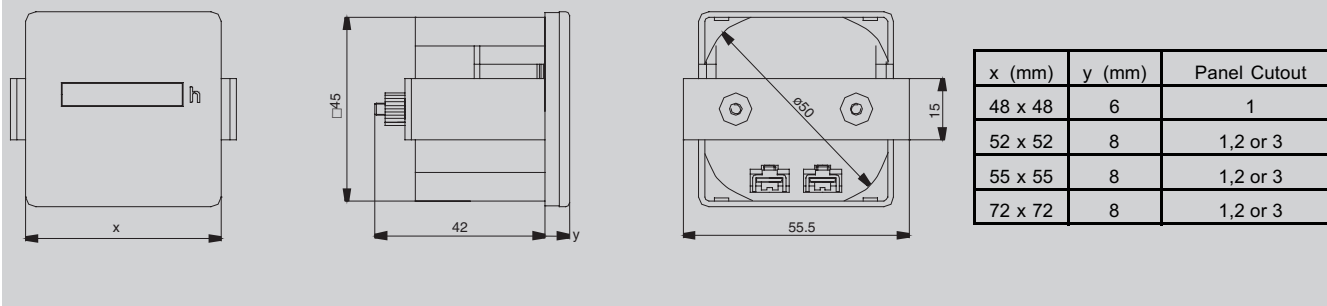
Panel Cutout for TS Series

Note: For mounting configurations see page 3, C mounting is on page 4.

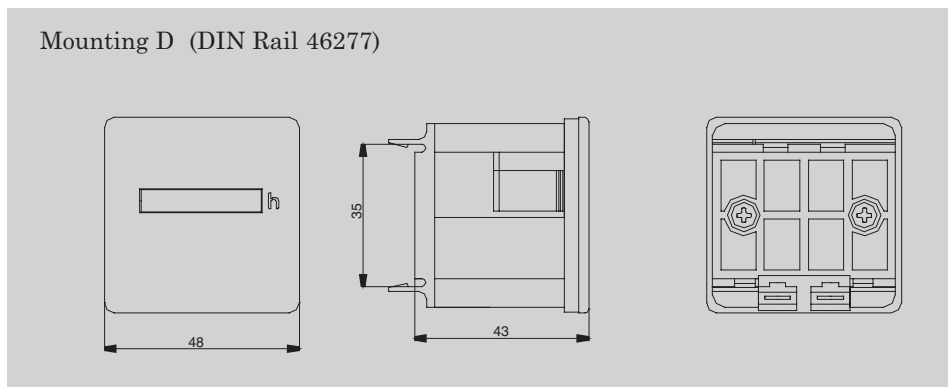


TS Series

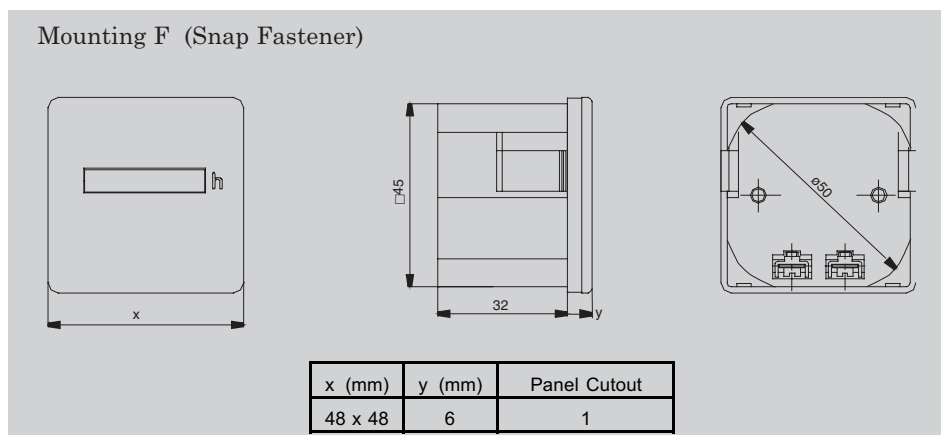
Mounting A (Aluminum Clamp)



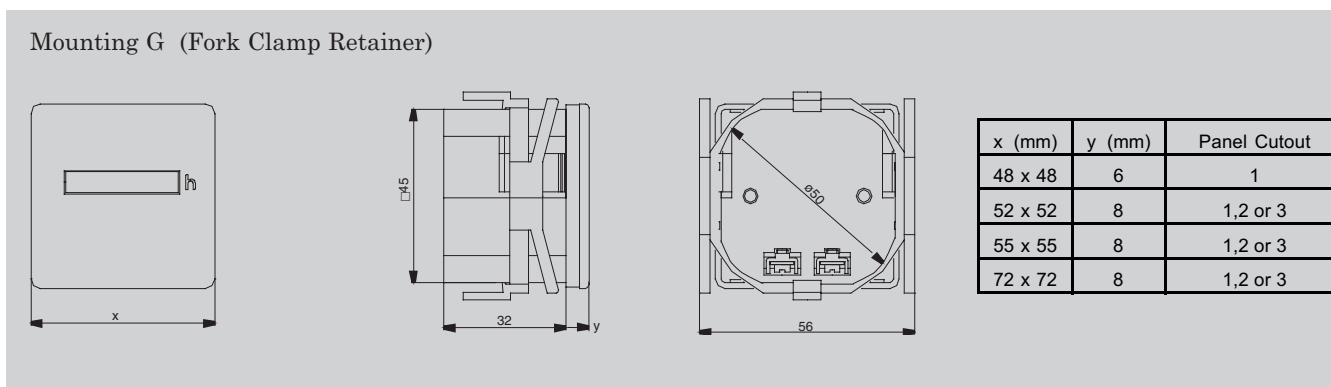
Mounting D (DIN Rail 46277)



Mounting F (Snap Fastener)



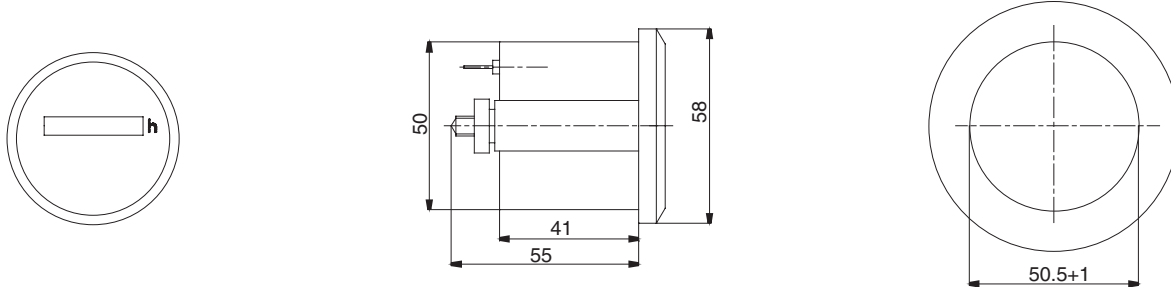
Mounting G (Fork Clamp Retainer)



TR Series

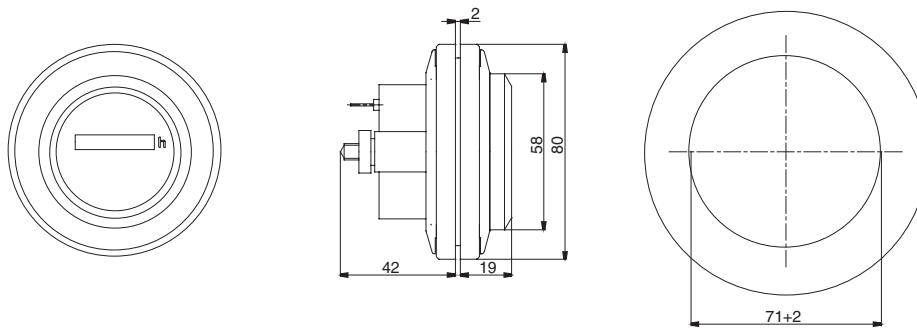
Aluminum clamp
Mounting A

Cutout 51mm diameter (2.01")



Anti-vibration boot and clamp
Mounting C

Cutout 71mm diameter (2.80") for TR and TS (square outline not shown)



Three screw front mounting
Mounting H

Cutout 58mm diameter (2.28")

