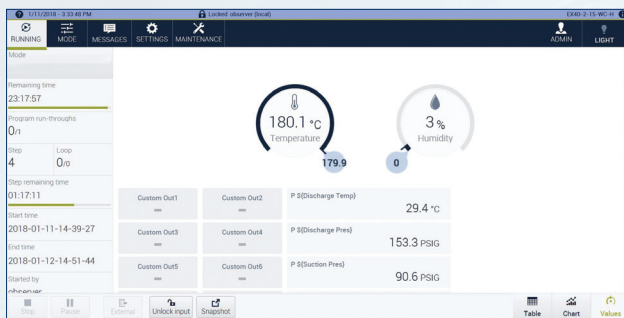


## The Advanced Controller Designed by End Users – for End Users

**WebSeason®** - the controller designed by end users, utilizing state-of-the-art web technology that exceeds the requirements for today's industrial standards. The look and feel is comparable to a mobile device- with swiping, 2-finger zoom, quick response, making it easy to use.

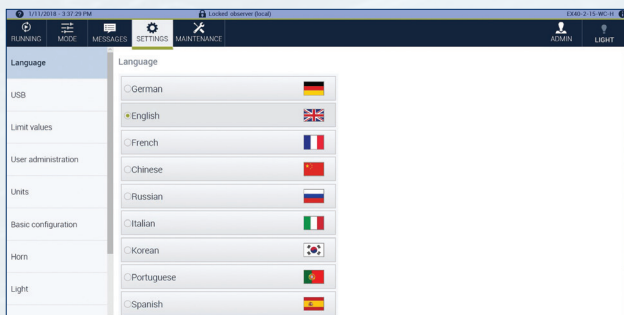
- Real Time Interface
- Multi-User
- Multi-Language
- Connect from any Web-Based Device
- Access from Anywhere Around the Globe
- 7" and 10" Screens Available



Main Menu



Real Time Profile



Multi-Language

| Step | Duration | Temperature °C | Humidity % | Custom Out1 | Custom Out2 | Custom Out3 | Custom Out4 | Custom Out5 | Custom Out6 |
|------|----------|----------------|------------|-------------|-------------|-------------|-------------|-------------|-------------|
| 1    | 00:00:00 | 179.8          | 0          | 0           | 0           | 0           | 0           | 0           | 0           |
| 2    | 00:00:00 | Wait for       | 179.9      | 0           | 0           | 0           | 0           | 0           | 0           |
| 3    | 02:00:00 | 180.0          | 0          | 0           | 0           | 0           | 0           | 0           | 0           |
| 4    | 00:00:00 | Wait for       | -70.0      | 0           | 0           | 0           | 0           | 0           | 0           |
| 5    | 02:00:00 | Wait for       | -70.0      | 0           | 0           | 0           | 0           | 0           | 0           |
| 6    | 00:00:00 | 180.0          | 0          | 0           | 0           | 0           | 0           | 0           | 0           |
| 7    | 02:00:00 | 180.0          | 0          | 0           | 0           | 0           | 0           | 0           | 0           |
| 8    | 00:00:00 | Wait for       | -70.0      | 0           | 0           | 0           | 0           | 0           | 0           |

"Table" Programming

| Variable    | Warning limit | Alarm limit |
|-------------|---------------|-------------|
| Temperature | 185.0 °C      | 185.0 °C    |
| Humidity    | 100 %         | 100 %       |
| Temperature | -73.0 °C      | -73.0 °C    |
| Humidity    | 0 %           | 0 %         |

Warning/Alarm Limits

| User administration | Name     | First and Last Name | User group | Act. | State | Comment |
|---------------------|----------|---------------------|------------|------|-------|---------|
| admin               | Admin    | Administrator       | ●          |      |       |         |
| userhigh            | UserHigh | UserHigh            | ●          |      |       |         |
| userlow             | UserLow  | UserLow             | ●          |      |       |         |

Multi-Level User Passwords

# WebSeason® - Program, Control and Monitor your testing - From anywhere around the globe.

Up to six users can simultaneously use any web-based device (such as smart phones, tablets, or laptops) to connect to the controller remotely, in their own language and choice of units of measurement. Multi-users can also create a testing program, view on-going tests, change set points, and more - all at the same time.

In addition, any user has remote access to view information, such as remaining test time, number of cycles, current steps and actual values, as well as warning and alarm notices.

With Weiss Technik optional **S!mpati** and **S!mpati TimeLabs** software, additional data and real-time images of the specimen can be viewed.



## Specifications

|                               |   |
|-------------------------------|---|
| Touch Panel                   | Auto dimming, capacitive sensing  |
| Program Memory                | 100 programs maximum  |
| Program Controller            | Start parameters for programs: immediate, delayed, real time, pause   |
| PID controller                | Special control algorithms, define/change per output demands  |
| Segments                      | 100 per program (maximum)   |
| Program Cycles/ Loops         | 9999 maximum/ (250 nested)  |
| Switch Inputs (Digital)       | 2 (load max. 24 V-DC, approx. 30 mA)  |
| Switch Outputs (Digital)      | 8 (potential-free contacts or 24 V-DC)  |
| Password Protection           | 3 levels, to prevent accidental changes   |
| Limit Value Monitoring System | For temperature and humidity  |
| Display Units                 | Switchable between imperial/metric  |
| Diagnostic System             | For information on operating times and possible operating failures  |
| Serial Interface (Option)     | For connection to a host computer system (i.e optional <b>S!MPATI</b> ® Remote software, <b>S!MPATI</b> ® Timelabs, or 3rd-party network) |
| TCP/IP Ethernet Interface     | For communication with 3rd-party software   |
| Multi-Language Display        | 10 languages (selectable) including English, Chinese, German, French, Italian, Korean, Russian, Polish, Czech, and Spanish                |

## Stand the test of time.

### Weiss Technik North America, Inc.

3881 N. Greenbrooke Dr. SE  
Grand Rapids, MI 49512 USA  
(616) 554-5020 • Fax: (616) 554-5021  
www.weiss-na.com  
24/7 Service Support Helpline: 1-800-361-6731

Join Us **LinkedIn**®

Global Partner for Environmental Test Chambers



Weiss Technik North America, Inc. Calibration Services are accredited by A2LA to ISO/IEC 17025



Weiss Technik North America, Inc. Quality System is registered to ISO9001:2015