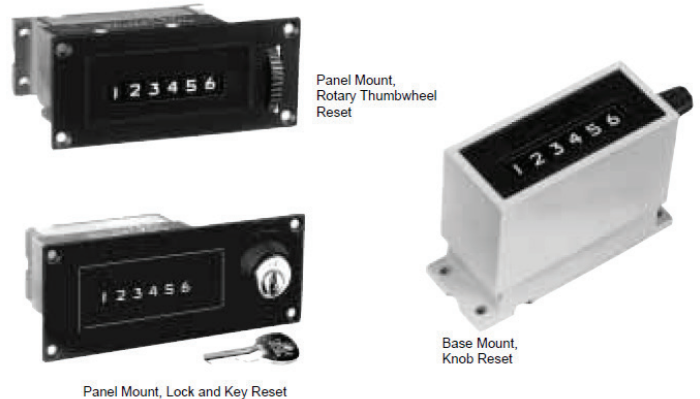


## 7443 Series General Purpose Totalizer

The perfect totalizer for a wide range of industrial applications. Precision internal working parts are supported and protected by its die-cast frame and heavy duty enclosure. Available with popular AC and DC voltage ranges, mounting styles, and reset features.

The 7443 Series is a good choice for new applications requiring an industrial duty counter, or for updating existing installations. Applications with poorly conditioned AC power lines are no problem. Rectifiers, which frequently fail due to power surges and transients, are not used. Instead, a precision wound coil drives AC models of 7443 Series.



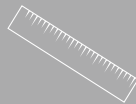
- Designed for industrial duty
- Crisp modern styling
- Recognized by Underwriters Laboratories
- Very readable white on black characters
- Six digit capacity
- Count speed to 600 per minute
- AC models have non-rectified design
- Long service life in harsh environments
- Lock & key reset model protects counted totals



TIME



COUNT



MEASURE

8:43

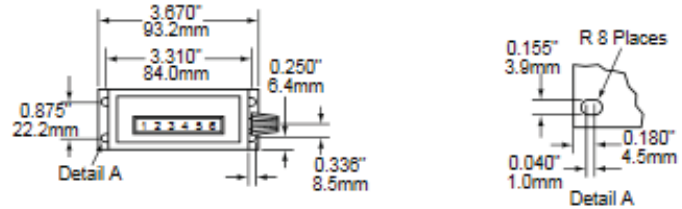
DISPLAY

## SPECIFICATIONS

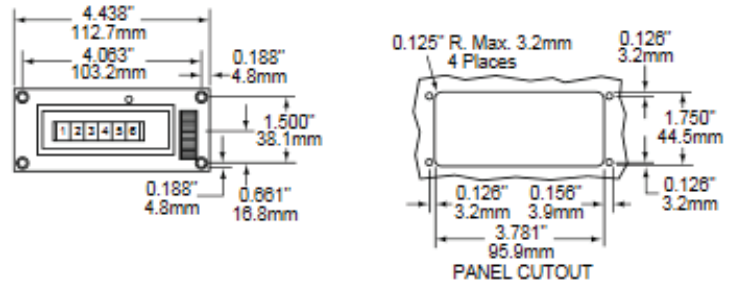
SPEED	600 cpm, 50 ms minimum on-time and off-time
MAXIMUM ON TIME	With 50% duty cycle, maximum permissible ON time is 5 minutes. Counter must not be energized continuously
VOLTAGE	See models. Allowable variation $\pm 10\%$ ( $\pm 10$ volts on 115 V and 230 V models)
POWER CONSUMPTION	6 watts nominal
NUMBER OF FIGURES	6
SIZE OF FIGURES	0.188" high x 0.16" wide (4.8 mm x 4.0 mm)
COLOR OF FIGURES	White on black
RESET	Knob Reset; Rotary Thumbwheel Reset; Lock-and-key Reset
CONNECTIONS	12" (305 mm), #22 AWG Leads from bottom
MOUNTING	Base; Panel
CONSTRUCTION	Wheels, Pinions: acetal resin Frame, Case: Die-cast Zamak
WEIGHT	Base Mount: 15 oz. (0.4 kg) Panel Mount: 1 lb. 2 oz. (0.5 kg) Lock and Key Reset: 1 lb. 6 oz. (0.6 kg)

## DIMENSIONS

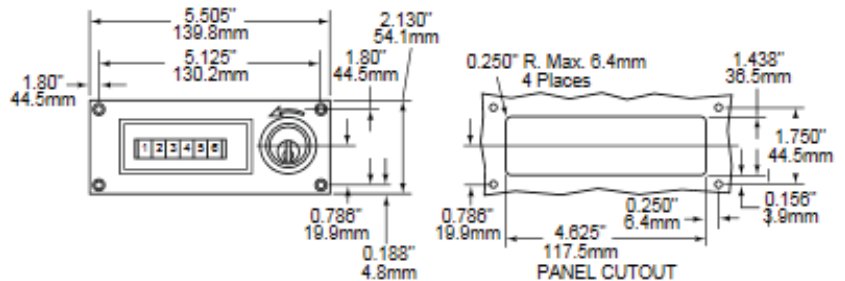
**Base Mount, Knob Reset**  
Depth: 2.570"/65.2mm



**Panel Mount, Rotary Reset**  
Depth: 2.530"/64.3mm



**Panel Mount, Lock & Key Reset**  
Depth: 2.530"/64.3mm



## ORDERING INFORMATION

### Standard Models

- 744386-011 Base Mount, Knob Reset, 115 VAC, UL/CSA
- 744396-017 Base Mount, Knob Reset, 12 VDC, UL
- 744396-016 Base Mount, Knob Reset, 24 VDC, UL
- 744396-012 Base Mount, Knob Reset, 230 VAC, UL
- 744386-211 Panel Mount, Rotary Thumbwheel Reset, 115 VAC, UL/CSA
- 744396-243 Panel Mount, Lock-and-key Reset, 24 VAC, UL
- 744386-241 Panel Mount, Lock-and-key Reset, 115 VAC, UL/CSA

Special variations available. Please consult factory.