

APPLICATION & SERVICE

AC Power Corp. offers products widely applied in multi-professional fields and provides the best power solutions to customers. Our mission is to satisfy customers' demand by considering the whole conditions including power environment, loading allocation, module solution alternative, thoughtful design, efficient manufacturing, and complete maintenance.

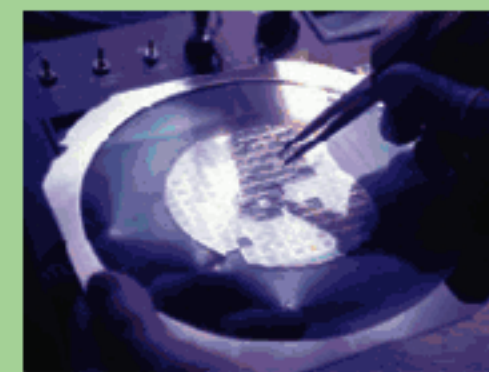
Application



CNC Machine



SMT Equipment



Semiconductor



Process & Control Equipment



Bioscience



Production Line



Office IT Equipment



Control Room



Communication Equipment



Electronic & Medical Equipment



Airport Control Tower Facilities



Transport System

Communication Systems

- ▲ TV Station
- ▲ ADSL
- ▲ Coaxial Cable TV System & Components
- ▲ Radio Communication Equipment & Systems
- ▲ Satellite & Communication Equipment
- ▲ Fiber-Optics System
- ▲ Lan Server

IT Field

- ▲ Home Electrical Appliances
- ▲ Information Appliances
- ▲ Office IT Equipment
- ▲ POS System

Computer & Computer Peripherals

- ▲ Electronic Data Processing (EDP) Center
- ▲ Server / Data Storage System
- ▲ Industrial PC

General Lab

- ▲ Program Control System
- ▲ Electronic Test Equipment

F / A

- ▲ Production Line
- ▲ IC (Integrated Circuit) Field
- ▲ CNC Machine
- ▲ SMT Equipment
- ▲ Auto-Insertion Equipment
- ▲ PCB Assembly Equipment
- ▲ Semiconductor (BGA, CSP, Flip Chip, LCD)
- ▲ Production Process and Control Equipment
- ▲ Printing Industry

Medical & Military

- ▲ Electronic & Medical equipment
- ▲ Medical Monitoring System
- ▲ Airport X-ray Scanning equipment
- ▲ Airport Facilities
- ▲ Airport Control Tower Facilities

Others

- ▲ Bioscience
- ▲ Gas Station
- ▲ Opto-Electronic Industry



The Power You Trust!



APPS Series 2kVA~300kVA

Intelligent Power Conditioner

AVR

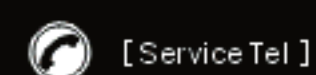
Professional Power Solution Provider



AC POWER Corp.

Address: 3F., No.200, Gangqian Road,
Neihu District, Taipei City 11494, Taiwan
http://www.acpower.net
E-mail:sales@acpower.net

Headquarters: Taipei
Branch Offices:
Taipei Taichung Kaohsiung
Tianjin Beijing Qingdao Shenyang
Suzhou Shanghai Nanjing Kunshan
Guangzhou Shenzhen Dongguan Xiamen Fuzhou



Taipei: +886-2-2627 1899
Suzhou: +86-512-6809 8868
Tianjin: +86-22-8398 3777

No.: AP-S-090709EN



APS -



[Input & Output Voltage please refer to Form1 at Page 7]

- Input:
- Noises
 - Undervoltages
 - Highvoltages
 - Power Surges
 - Swell
 - Interruption



Power Line Conditioner APS series-Single Phase (2kVA~100kVA)

Model	APS-11002	APS-11005	APS-11007	APS-11010	APS-11015	APS-11020	APS-11030	APS-11050	APS-11080	APS-11100	
Capacity	2kVA	5kVA	7.5kVA	10kVA	15kVA	20kVA	30kVA	50kVA	80kVA	100kVA	
Input (AC)	Single Phase										
	Phase										
	Voltage	220V (G) ①									
	Voltage Range	±18%		±18% (±25% optional)							
	Frequency	47Hz ~ 63Hz									
Power Factor	0.95 ~ 1										
Output (AC)	Single Phase										
	Voltage	220V (G) ①									
	Frequency	Same as input frequency.									
Power Factor	±0.7~1										
VA Efficiency	≥98% at Full load / No load energy power consumption≤2%										
Line Regulation	±1%~±4%		±1%~±2%								
Load Regulation	±1%~±4%		±1%~±2%								
Total Harmonic Distortion(THD)	≤1% (Additional waveform distortion)										
Response Time	≤4ms/Step										
Indicator	Voltmeter	Yes									
	Ammeter	— Yes									
	LED	Power abnormal, output voltage overrun (high voltage/low voltage), auto bypass supply									
Protection	Over Range	Power auto shut & LED Indicator		LED Indicator							
	Over Load	No fuse breaker		150% for 15Sec.; 130% for 30Sec.; 110% for 300Sec.							
	Over/Under Voltage	Alarm & Auto shut off		Alarm (option) & Auto shut off (option)							
	Auto Bypass	LED Indicator & Alarm									
	Noise Suppressors	High energy surge absorber, LC Filter, EMI Filter (option)									
Overload Capacity	200% for 10 Sec.; 500% for 50ms										
Audible Noise (1 meter)	≤45 dB		≤50 dB				≤55 dB				
Cooling System	Natural cooling		Fan cooling								
Connections	Socket or Terminal		Terminal				Copper Busbar				
Environment	Ambient Temperature	0°C ~ 40°C									
	Humidity	0~95% Non-condensing									

- ① Other required voltage, please kindly refer to Form 1 at page 7.
- ② Weight and size vary with input and output voltage, please contact us.
- ③ Custom-made specifications are on request.
- ④ All specifications are subject to change without prior notice.

Power Line Conditioner APS series-Three Phase (10kVA~75kVA)

Model	APS-33010	APS-33015	APS-33022	APS-33030	APS-33045	APS-33060	APS-33075	
Capacity	10kVA	15kVA	22kVA	30kVA	45kVA	60kVA	75kVA	
Input (AC)	Three Phase							
	Phase							
	Voltage	220V / 380V (T) ①						
	Voltage Range	±18%		±18% (±25% optional)				
	Frequency	47Hz ~ 63Hz						
Power Factor	0.95 ~ 1							
Output (AC)	Three Phase							
	Voltage	220V / 380V (T) ①						
	Frequency	Same as input frequency.						
Power Factor	±0.7~1							
VA Efficiency	≥98% at Full load / No load energy power consumption≤2%							
Line Regulation	±1%~±4%		±1%~±2%					
Load Regulation	±1%~±4%		±1%~±2%					
Total Harmonic Distortion (THD)	≤1% (Additional waveform distortion)							
Response Time	≤4ms/Step							
Indicator	Voltmeter	Show 0~300 VAC for each phase						
	Ammeter	Show R.S.T. Load's Current.						
	LED	Power abnormal, output voltage overrun (high voltage/low voltage), auto bypass supply						
Protection	Over Range	Power auto shut off (option) & LED indicator						
	Over Load	No fuse breaker		150% for 15Sec.; 130% for 30Sec.; 110% for 300Sec.				
	Auto Bypass	LED Indicator & Alarm						
	Noise Suppressors	High energy surge absorber, LC Filter, EMI Filter (option)						
	Over/Under Voltage	Alarm (option) & Auto shut off (option)						
R.S.T. Phase Failure	LED Indicator (option) & Alarm (option) & Auto shut off (option)							
Overload Capacity	200% for 10 Sec.; 500% for 50ms							
Audible Noise (1 meter)	≤50 dB			≤55 dB				
Cooling System	Natural cooling			Fan cooling				
Connections	Terminal							
Environment	Ambient Temperature	0°C ~ 40°C						
	Humidity	0~95% Non-condensing						

- ① Other required voltage, please kindly refer to Form 1 at page 7.
- ② Weight and size vary with input and output voltage, please contact us.
- ③ Custom-made specifications are on request.
- ④ All specifications are subject to change without prior notice.

Features & Advantages

- ▲ 4H
HIGH Input Power Factor : ≥ 0.95 .
HIGH VA Efficiency : $\geq 98\%$ at full load.
HIGH Over Load Capacity : 300% Overload Rated.
HIGH Reliability : Microprocessor Control & Modular Design.

- ▲ 6L
LOW Environmental Pollution : Green Energy.
LOW Electromagnetic Wave Interference : Very suitable to communication system which must be kept away from electromagnetic interference resources.
LOW Harmonic Pollution: Low distortion and pure output sine waveform, extend equipment life.
LOW Audible Noise : $\leq 45\text{dB}$ at 1 meter.
LOW Maintenance Costs : Plug & Play Modular Design permits quick and convenient maintenance; no carbon brush needs to be replaced periodically.
LOW No Load Energy Consumption : $\leq 2\%$.

- ▲ CLEAN
Fit up High Energy Surge Absorbers, LC Filter, EMI Filter (option), Isolation Transformer (option), the APS provides clean and constant AC Power output. No radiated interference to electromagnetic field(EMF); No conducted interference to electrified wire fence.

- ▲ FAST
Fast Response Time ($\leq 4\text{ms}$. per step), sensitive voltage regulation.

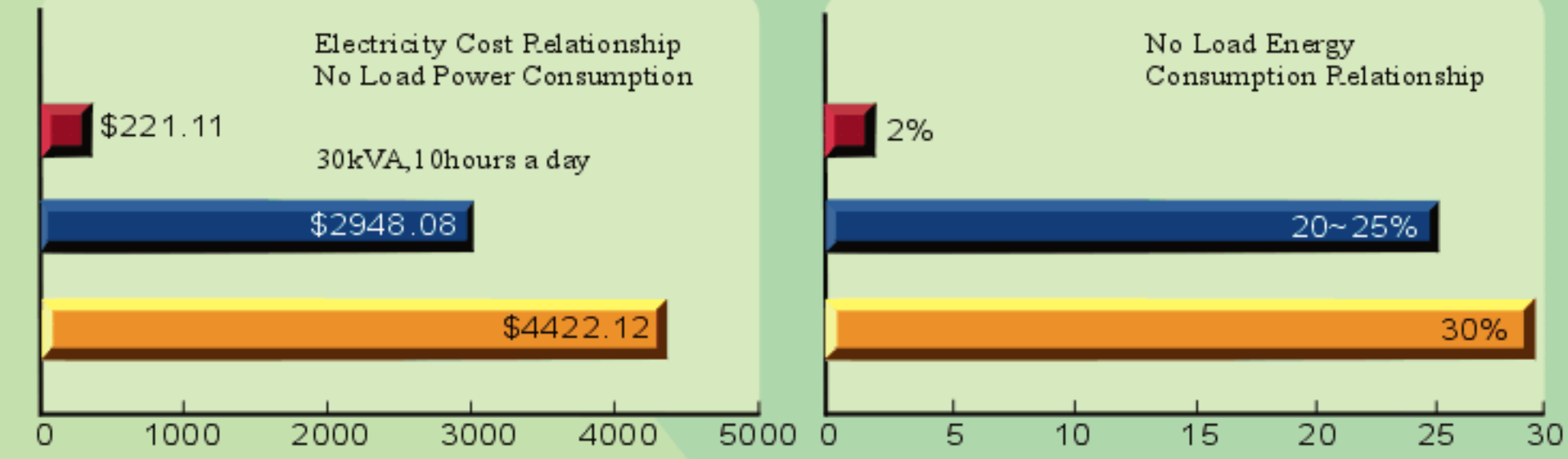
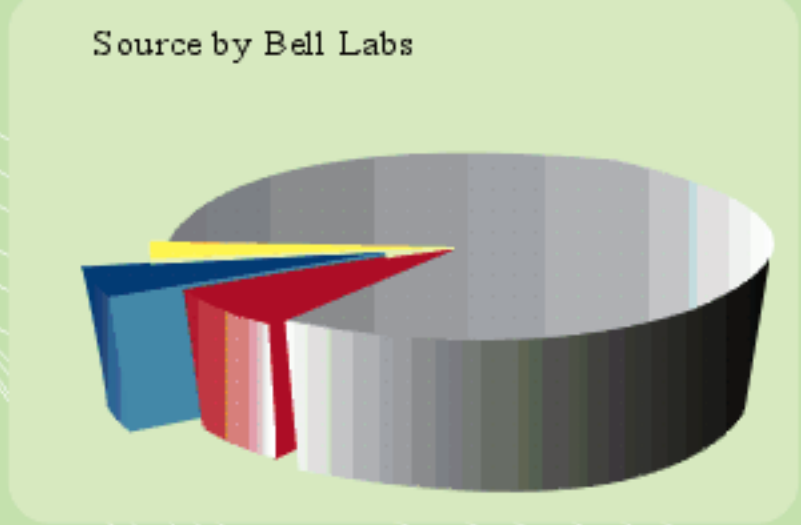
- ▲ NEW
CE approval. New Design; New Circuits; New Patent.

- ▲ SAFE
Automatic Electronic Bypass Protection, Over Load Protection, Over Range Protection to let your load well protected.

- ▲ SAVE
Superior No Load Energy Consumption saves electric power & money; Compact Size saves your space & transportation fee.

- ▲ STABLE
Independent Phase Voltage Regulation. Characteristics will not be violated under 100% unbalance load.

- ▲ WIDE
Wide input voltage range suitable for anywhere.



- Brownouts 87.0%
- Spikes 7.4%
- Blackouts 4.7%
- Overvoltages 0.7%

Power Line Conditioner APS series-Three Phase (100kVA~300kVA)

Model		APS-33100	APS-33120	APS-33150	APS-33180	APS-33240	APS-33300
Capacity		100kVA	120kVA	150kVA	180kVA	240kVA	300kVA
Input (A C)	Phase	Three Phase					
	Voltage	220V / 380V (T) ①					
	Voltage Range	$\pm 18\%$ ($\pm 25\%$ optional)					
	Frequency	47Hz ~ 63Hz					
	Power Factor	0.95 ~ 1					
Output (A C)	Phase	Three Phase					
	Voltage	220V / 380V (T) ①					
	Frequency	Same as input frequency.					
	Power Factor	$\pm 0.7 \sim 1$					
VA Efficiency		$\geq 98\%$ at Full load / No load energy power consumption $\leq 2\%$					
Line Regulation		$\pm 1\% \sim \pm 2\%$					
Load Regulation		$\pm 1\% \sim \pm 2\%$					
Total Harmonic Distortion (THD)		$\leq 1\%$ (Additional waveform distortion)					
Response Time		$\leq 4\text{ms}/\text{Step}$					
Indicator	LCD	Display electrical parameters, state of the control, memories of history events					
	LED	Power abnormal, output voltage overrun (high voltage/low voltage), auto bypass supply					
Protection	Over Range	Power auto shut off (option) & LED indicator					
	Over Load	150% for 15Sec.; 130% for 30Sec.; 110% for 300Sec.					
	Auto Bypass	LED Indicator & Alarm					
	Noise Suppressors	High energy surge absorber, LC Filter, EMI Filter (option)					
	Over/Under Voltage	Alarm (option) & Auto shut off (option)					
R.S.T. Phase Failure		Alarm (option) & Auto shut off (option)					
Overload Capacity		200% for 10 Sec.; 500% for 50ms					
Audible Noise (1 meter)		$\leq 58\text{dB}$					
Cooling System		Fan cooling					
Connections		Terminal			Copper Busbar		
Environment	Ambient Temperature	0°C ~ 40°C					
	Humidity	0~95% Non-condensing					

① Other required voltage, please kindly refer to Form 1 at page 7.
 ② Weight and size vary with input and output voltage, please contact us.
 ③ Custom-made specifications are on request.
 ④ All specifications are subject to change without prior notice.

APS series Case Number & Size

[Unit of Measurement: mm (Width x Depth x Height)]

Note: No. 1 case height includes feet mats; Others height includes feet rounds.



120×370×230



170×420×335



200×560×430



300×560×660



355×660×840



355×660×1360



450×800×965



450×800×1300



450×800×1500



600×900×965



600×1200×1500



800×1200×1700

Form1: APS series Input & Output Voltage

B	100V/110V/115V/120V	O	110/190V	X	100/200V
G	200V/208V/220V/230V/240V	Q	115/200V, 120/208V, 127/220V	Y	110/220V
J	380V/400V/415V	T	220/380V, 230/400V, 240/415V	Z	115/230V
M	440V/480V	W	254/440V		

★Other Input Voltages not listed in this form are all S (Special Specification) type.

Form2: APS series-Single Phase

Model	Case Number & Weight (Kg)					
	110V → 110V System	Weight	220V → 220V System	Weight	220V ↔ 110V System	Weight
APS-11002	①	11	①	16	—	—
APS-11005	②	19	②	21	④	72
APS-11007	③	37	③	35	④	87
APS-11010	③	39	③	40	④	113
APS-11015	④	61	③	45	④	139
APS-11020	—	—	④	75	⑦	180
APS-11030	—	—	⑤	140	⑦	250
APS-11050	—	—	⑦	270	—	—
APS-11080	—	—	⑩	390	—	—
APS-11100	—	—	⑩	430	—	—

Form3: APS series-Three Phase

Model	Case Number & Weight (Kg)					
	Δ → Δ Connection	Weight	Δ ↔ Y Connection	Weight	Y → Y Connection	Weight
APS-33010	⑥	142	⑥	164	⑤	80
APS-33015	⑥	178	⑥	190	⑤	85
APS-33022	⑥	201	⑥	251	⑤	100
APS-33030	⑥	245	⑥	301	⑤	150
APS-33045	⑧	308	⑨	360	⑤	190
APS-33060	⑨	320	⑨	464	⑦	230
APS-33075	⑨	350	⑨	600	⑦	270
APS-33100	—	—	—	—	⑪	430
APS-33120	—	—	—	—	⑪	550
APS-33150	—	—	—	—	⑪	630
APS-33180	—	—	—	—	⑫	660
APS-33240	—	—	—	—	⑫	700
APS-33300	—	—	—	—	⑫	750