

Models CTW3-60-T50 & CTWH3-60-T50

Wound Primary Current Transformers Medium Voltage

Application

Metering and relaying.

Frequency

50-400 Hz

Maximum System Voltage

5.6kV, BIL 60kV.

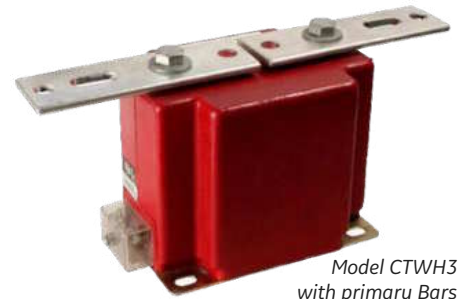
Continuous Thermal Rating Factor

1.5 at 30 °C., 1.33 at 55 °C.
150:5 and 600:5- 1.33 at 30 °C., 1.00 at 55 °C.
250:5- 1.00 at 30 °C., 0.85 at 55 °C.

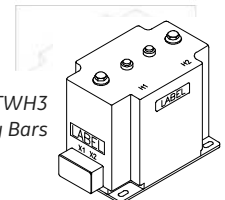
Primary terminals are 1/2-13 bolts with one Belleville washer. Secondary terminals are brass studs No. 10-32 with one flatwasher, lockwasher and regular nut.

Supplied with short circuiting secondary terminal cover. Vacuum cast polyurethane resin. Other ratios, secondary currents and dual ratios are available. Refer to factory.

Approximate weight 20 lbs.



Model CTWH3
with primary Bars



Model CTWH3
without primary Bars

REGULATORY AGENCY APPROVALS



E145172



LR89403

Manufactured to meet the requirements of ANSI/IEEE C57.13.

Models CTW3-60-T50 & CTWH3-60-T50

CAUTION: Use only the Belleville washers supplied. Tighten to between 25 to 30 foot-pounds. DO NOT OVERTIGHTEN

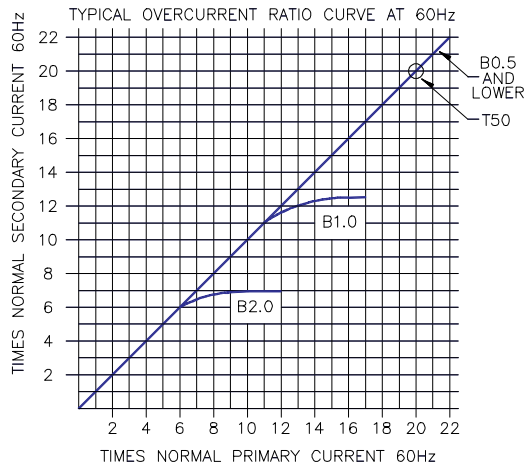
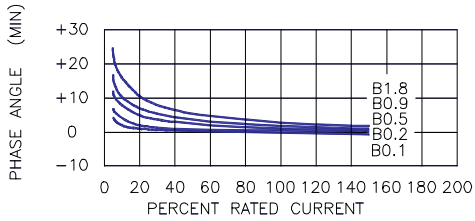
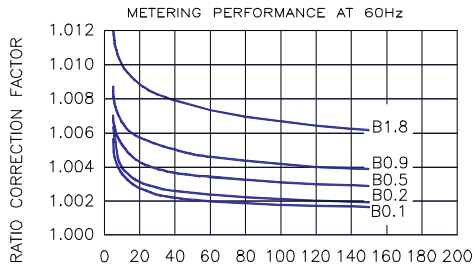
Catalog Number	Current Ratio	Relay Class	ANSI Metering Class at 60 Hz					** Thermal Current Rating 1 Second RMS Amps
			B0.1	B0.2	B0.5	B0.9	B1.8	
CTW3-60-T50-050	5:5	T50	0.3	0.3	0.3	0.6	1.2	375
CTW3-60-T50-100	10:5	T50	0.3	0.3	0.3	0.6	1.2	1,000
CTW3-60-T50-150	15:5	T50	0.3	0.3	0.3	0.6	1.2	1,690
CTW3-60-T50-200	20:5	T50	0.3	0.3	0.3	0.6	1.2	1,900
CTW3-60-T50-250	25:5	T50	0.3	0.3	0.3	0.6	1.2	2,700
CTW3-60-T50-300	30:5	T50	0.3	0.3	0.3	0.6	1.2	2,700
CTW3-60-T50-400	40:5	T50	0.3	0.3	0.3	0.6	1.2	4,720
CTW3-60-T50-500	50:5	T50	0.3	0.3	0.3	0.6	1.2	4,720
CTW3-60-T50-750	75:5	T50	0.3	0.3	0.3	0.6	1.2	8,630
CTW3-60-T50-101	100:5	T50	0.3	0.3	0.3	0.6	1.2	8,630
CTW3-60-T50-151	150:5	T50	0.3	0.3	0.3	0.6	1.2	14,380
CTW3-60-T50-201	200:5	T50	0.3	0.3	0.3	0.6	1.2	17,250
CTW3-60-T50-251	250:5	T50	0.3	0.3	0.3	0.6	1.2	17,250
CTW3-60-T50-301	300:5	T50	0.3	0.3	0.3	0.6	1.2	37,800
CTW3-60-T50-401	400:5	T50	0.3	0.3	0.3	0.6	1.2	37,800
CTW3-60-T50-501	500:5	T50	0.3	0.3	0.3	0.6	1.2	37,800
CTW3-60-T50-601	600:5	T50	0.3	0.3	0.3	0.6	1.2	37,800

* For ordering with primary bars, change model number to CTWH3.

**With a burden of B0.1 or greater connected to the secondary

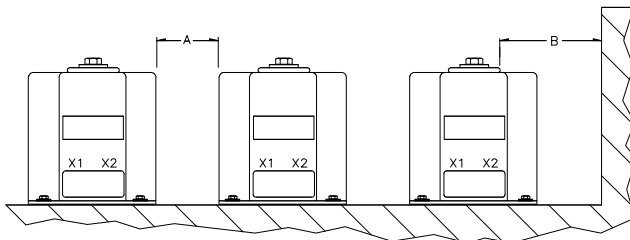
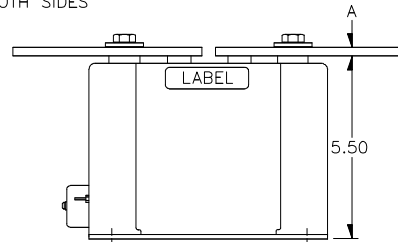
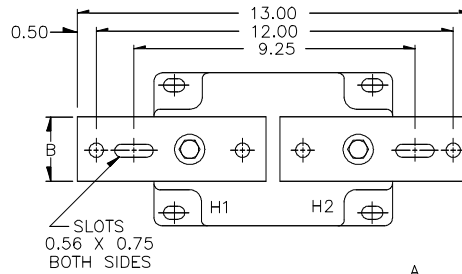
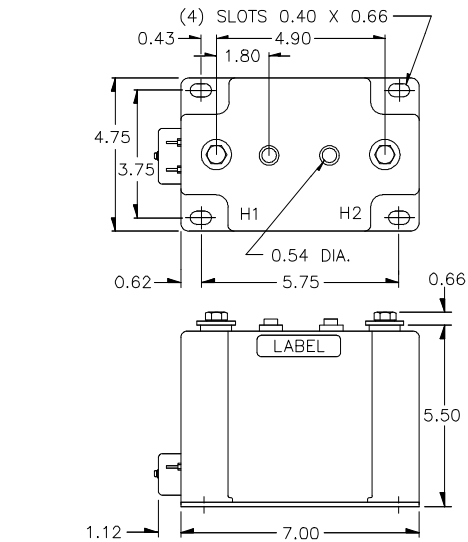


Models CTW3-60-T50 & CTWH3-60-T50 Wound Primary



PRIMARY CURRENT	BAR SIZES	
	A	B
5 TO 150A	0.19	1.50
200 TO 600A	0.25	2.00

WITH PRIMARY BARS



RECOMMENDED MINIMUM SPACINGS

A = Unit to Unit = 0.75" minimum.
B = HV to Ground in Air = 3.00" minimum.

Recommended spacing are for guidance only. User needs to set appropriate values to assure performance for high potential test, impulse test, high humidity, partial discharge, high altitude, and other considerations like configuration.

GEGridSolutions.com

Grid-AIS-L4-ITL_Model_CTW3T50-1432-2017_06-EN. © Copyright 2017. General Electric Company and Instrument Transformers LLC reserve the right to change specifications of described products at any time without notice and without obligation to notify any person of such changes.

Worldwide Contact Center

Web: www.GEGridSolutions.com/contact

Phone: +44 (0) 1785 250 070

USA and Canada: +1 (0) 800 547 8629

Europe, Middle East and Africa: +34 (0) 94 485 88 00

