

# VOLTAGE TRANSFORMER

## Model 456

FREQUENCY:  
60 Hz  
STANDARD SECONDARY VOLTAGE:  
120 Volts  
INSULATION LEVEL:  
600 Volt, 10 kv BIL full wave.

ACCURACY CLASS:  
0.3 W, X, M and 0.6Y  
Those marked \*\* are  
0.6 W, X, M and Y  
THERMAL RATING:  
500 VA at 30°C amb.,  
300 VA at 55°C amb.

REGULATORY AGENCY APPROVALS

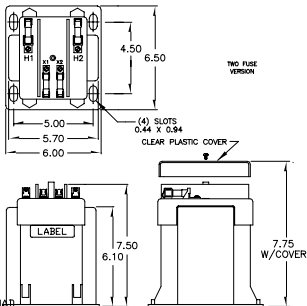
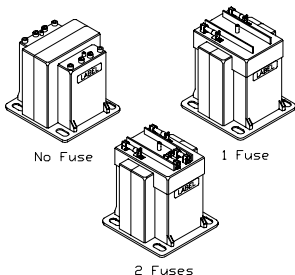


Manufactured to meet the requirements of ANSI C57.13.

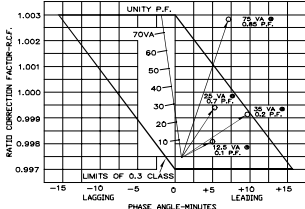
Classified by UL in accordance with IEC 44-2

- This page contains a circle diagram for the estimation of the errors for other than rated burdens. See page 20 in this section for a description of its use.
- When only one fuse is used, it must be connected into the line side (H1) terminal wiring. This will prevent the presence of voltage at the H1 terminal for a ruptured fuse in the neutral (H2) terminal wiring for line-to-neutral connected transformers.
- Approximate weight: 18.5 lbs.

- The primary and secondary terminals are No. 10-32 screws into 3/8" deep brass inserts and fitted with one lockwasher and flatwasher and are contained in a sealable terminal cover.
- The core and coil assembly is encased in a thermoplastic shell and filled with resin.
- These transformers are designed for operation line-to-line. They may also be operated line-to-ground or line-to-neutral at reduced voltage, (58% of rated volts).
- It is desirable to use a 5.0 amp BBS type or equal fuse in the secondary to protect the transformer.
- With two exceptions these transformers are ANSI C57.13 group 1. Those marked \* are group 2.
- Models designed specifically for 50Hz operation are available with reduced performance consult factory for details.
- Fuse blocks containing type KTK-R (class CC) fuses can be fitted.
- When primary fuses are requested, the ratings will be as given in the table below.



VOLTAGE TRANSFORMER CIRCLE DIAGRAM  
THIS GRAPH IS DRAWN FOR A 60HZ, 0.6 P.F. SYSTEM LOAD



CATALOG NUMBERS			VOLTAGE RATING	TURNS RATIO	REG. PRIMARY FUSE RATING
NOT FUSED	PRIMARY FUSES ONLY	PRIMARY AND SECONDARY FUSES			
*456-069	456-069F	456-069FF	69.3:120	0.58:1	12.0
*456-120	456-120F	456-120FF	120:120	1:1	10.0
456-208	456-208F	456-208FF	208:120	1.73:1	6.0
456-240	456-240F	456-240FF	240:120	2:1	6.0
456-277	456-277F	456-277FF	277:120	2.31:1	6.0
456-288	456-288F	456-288FF	288:120	2.4:1	5.0
456-300	456-300F	456-300FF	300:120	2.5:1	4.0
456-346	456-346F	456-346FF	346:120	2.88:1	4.0
*456-480	*456-480F	*456-480FF	480:120	4:1	3.0
*456-600	*456-600F	*456-600FF	600:120	5:1	2.0

Retro Fit Fuse Kit Order No. 0222 PL 7019