

VOLTAGE TRANSFORMER

Model 460 F & FF

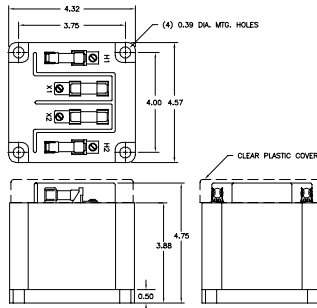
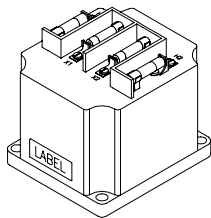
FREQUENCY: 60 Hz
 STANDARD SECONDARY VOLTAGE: 120 Volts
 INSULATION LEVEL: 600 Volt, 10 kv BIL full wave.

ACCURACY CLASS: 0.6 W, 1.2 X at 60 Hz.
 THERMAL RATING: 150 VA at 30°C amb., 100 VA at 55°C amb.

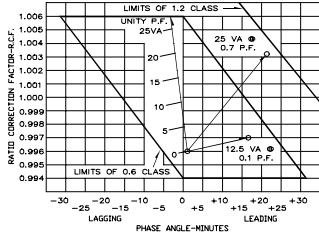
REGULATORY AGENCY APPROVALS

 Manufactured to meet the requirements of ANSI C57.13. Classified by UL in accordance with ED 44-2.

- Terminals are brass screws No. 8-32 with one lockwasher, flatwasher.
- The core and coil assembly is encased in a thermoplastic shell and filled with resin.
- These transformers are designed for operation line-to-line. They may also be operated line-to-ground or line-to-neutral at reduced voltage, (58% of rated volts).
- It is desirable to use a 1.6 amp BES type or equal fuse in the secondary to protect the transformer.
- With two exceptions these transformers are ANSI C57.13 group 1. Those marked * are group 2.
- Primary fuses are class CC rejection type.
- Models designed specifically for 50 Hz operation are available with reduced performance consult factory for details.
- This page contains a circle diagram for the estimation of the errors for other than rated burdens. See page 20 in this section for a description of its use.
- Approximate weight: 7.75 lbs.



VOLTAGE TRANSFORMER CIRCLE DIAGRAM
 THIS GRAPH IS DRAWN FOR A 60HZ, 0.6 P.F. SYSTEM



CATALOG NUMBER	VOLTAGE RATING	TURNS RATIO	REC. PRIMARY FUSE RATING
460-069F	460-069FF	69.3:120	0.58:1
460-120F	460-120FF	120:120	1:1
460-208F	460-208FF	208:120	1.73:1
460-240F	460-240FF	240:120	2:1
460-277F	460-277FF	277:120	2.31:1
460-288F	460-288FF	288:120	2.4:1
460-300F	460-300FF	300:120	2.5:1
460-346F	460-346FF	346:120	2.88:1
*460-480F	*460-480FF	*480:120	4:1
*460-600F	*460-600FF	*600:120	5:1