

CONTROL POWER TRANSFORMERS

Model CPT3-60-5

Model CPT5-95-5

APPLICATION:
To provide control power in medium voltage switchgear.

FREQUENCY:
60 Hz.

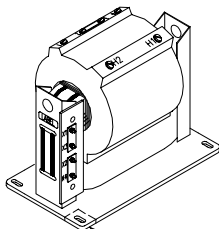
INSULATION LEVEL:

CPT3:
5 kV, 60 kV BIL full wave.

CPT5:
15 kV, 95 kV BIL full wave.

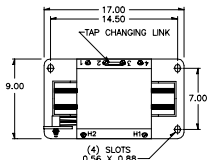
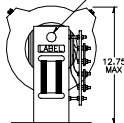
THERMAL RATING:
5 kVA at 30°C. ambient
4.3 kVA at 55°C. ambient.

- Primary terminals are brass screws 1/4"-20 with one flatwasher and starwasher.
- Secondary terminals are brass studs 3/8"-18 with one flatwasher, lockwasher and two nuts, plus series/parallel links.
- The transformer High Voltage winding is vacuum encapsulated in epoxy resin.
- Supplied with $\pm 1\frac{1}{2}\%$ or $2 \pm 2\frac{1}{2}\%$ taps above & below nominal voltage on the primary winding.
- Available as unfused only.
- Self cooled.
- Steel mounting base.
- For indoor use.
- Approximate weight 165 lbs.

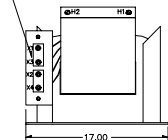


BARE CORNER FOR GROUNDING

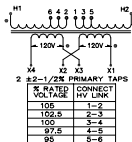
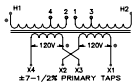
(2) LIFTING HOLES
1.12 DIA.



(2) SERIES/PARALLEL LINKS



CONNECTION DIAGRAMS



Refer to Sales for 50 Hz.

***CATALOG NO.	PRIMARY VOLTAGE	RATIO	SECONDARY VOLTAGE	**FUSE RATING
CPT3-60-5-242	2400	20:1	120/240	7E
CPT3-60-5-4161	4160	34.7:1	120/240	5E
CPT3-60-5-482	4800	40:1	120/240	5E
CPT5-95-5-722	7200	60:1	120/240	3E
CPT5-95-5-842	8400	70:1	120/240	3E
CPT5-95-5-123	12000	100:1	120/240	2E
CPT5-95-5-1242	12470	104:1	120/240	2E
CPT5-95-5-1322	13200	110:1	120/240	2E
CPT5-95-5-1382	13800	115:1	120/240	2E
CPT5-95-5-1442*	14400	120:1	120/240	2E

*Not available with primary taps.

**Note all fuse ratings are based upon NEC transformer overcurrent protection recommendations. Specific applications may require other ratings.

***For $1\frac{1}{2}\%$ taps use suffix "A" after Catalog No.

***For $2 \pm 2\frac{1}{2}\%$ taps use suffix "B" after Catalog No.