

CONTROL POWER TRANSFORMER

Model 3CPTDV3-60-75

Model 3CPTDV5-95-75

(FOR VERTICAL MOUNTING)

APPLICATION:
To provide control power in medium voltage switchgear, self-cooled, for indoor use only.

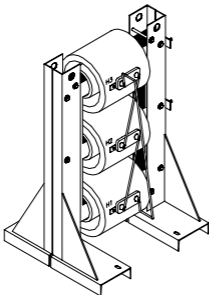
FREQUENCY:
60 Hz.

INSULATION LEVEL:
5 kV & 15 kV Class,
60 kV & 95 kV B.I.L.L.,
150°C.

THERMAL RATING:
75 kVA at 30°C ambient,
64.3 kVA at 55°C ambient,
80°C rise.

- Partial discharge free at rated voltage in accordance with Canadian standard C3.
- H.V. terminals are ILSCO #B-2 connector.
- L.V. terminals are 1/2-13 UNC 2A brass studs.
- Windings are encapsulated in epoxy resin. Mounting base is steel. Assembly is varnish treated.
- (6) Mounting slots are 0.37 x 0.75, Typ.
- Low voltage available, 208 Y/120
480 Y/277
600 Y/346
240 Δ
480 Δ
600 Δ

- For indoor use.
- Approximate weight 2000 lbs.



PRIMARY VOLTS	CONNECT
107.5K	1 - 2
100K	2 - 3
92.5K	3 - 4

1 ±7-1/2% PRIMARY TAPS - SUFFIX "A"

PRIMARY VOLTS	CONNECT
155K	1 - 2
150.5K	2 - 3
100K	3 - 4
97.5K	4 - 5
92.5K	5 - 6

2 ±2-1/2% PRIMARY TAPS - SUFFIX "B"

* Tap suffix "A" or "B"

** Note all fuse ratings are based upon NEC transformer overcurrent protection recommendations. Specific applications may require other ratings.

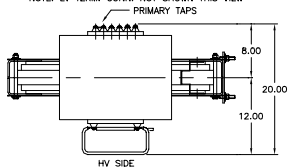
CATALOG NO.	PRIMARY VOLTAGE	**FUSE RATING
3CPTDV3-60-75-4161*	4160	25F
3CPTDV3-60-75-482*	4800	20E

CATALOG NO.	PRIMARY VOLTAGE	**FUSE RATING
3CPTDV5-95-75-722*	7200	20E
3CPTDV5-95-75-842*	8400	20E
3CPTDV5-95-75-123*	12000	10E
3CPTDV5-95-75-1242*	12470	10E
3CPTDV5-95-75-1322*	13200	10E
3CPTDV5-95-75-1382*	13800	10E

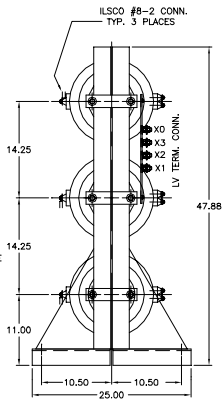
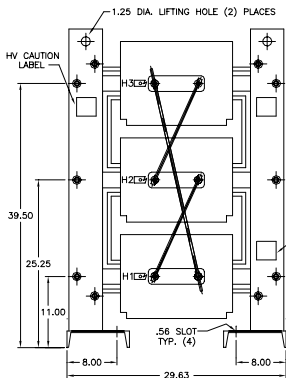
STANDARD TYPICAL VOLTAGES - CONSULT FACTORY FOR SPECIALS

Model 3CPTDV3-60-75 Model 3CPTDV5-95-75

NOTE: LV TERM. CONN. NOT SHOWN THIS VIEW



LV TERMINALS
FACING TERMINALS



FOR VERTICAL MOUNTING

