

CURRENT TRANSFORMER

Model 309MR

Window Diameter 5.75"

REGULATORY AGENCY APPROVALS



E93779



LR89403

Manufactured to meet the requirements of ANSI/IEEE C57.13.
Classified by U.L. in accordance with IEC 44-1

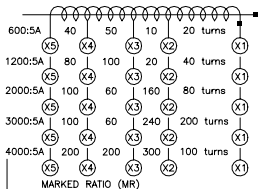
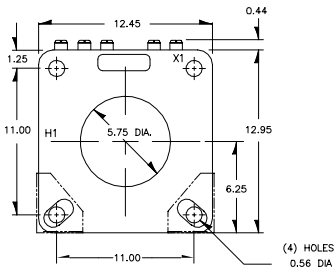
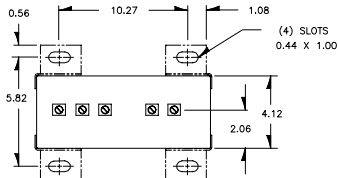
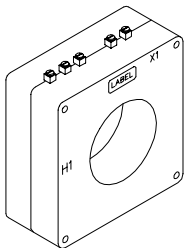
APPLICATION:
Relaying.

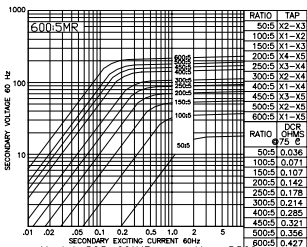
FREQUENCY:
50-400Hz

INSULATION LEVEL:
0.6 kV, BIL 10 kV full wave.

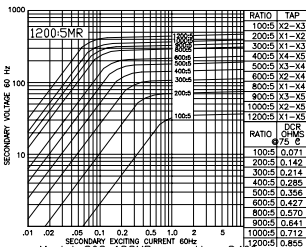
CONTINUOUS THERMAL
CURRENT RATING FACTOR:
See TRF at curves.

- Terminals are brass screws No.10-32 with one flatwasher and lockwasher.
- The transformer winding is arranged so that the turns are fully distributed between all taps.
- Order Mounting Bracket Kit No. 0221B01525 separately.
- Approximate weight 62 lbs.

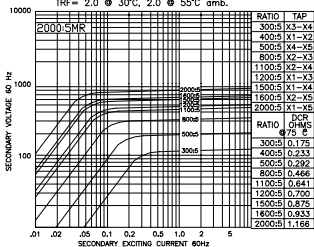




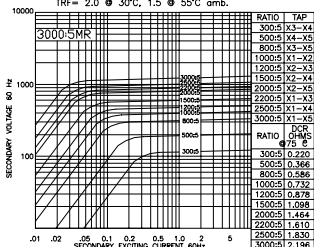
Model 309-601MR - rating C200
TRF = 2.0 @ 30°C, 2.0 @ 55°C amb.



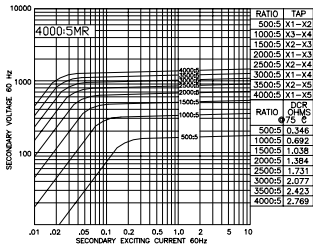
Model 309-122MR - rating C400
TRF = 2.0 @ 30°C, 1.5 @ 55°C amb.



Model 309-202MR - rating C800
TRF = 1.5 @ 30°C, 1.0 @ 55°C amb.



Model 309-302MR - rating C800
TRF = 1.0 @ 30°C, 0.8 @ 55°C amb.



Model 309-402MR - rating C800
TRF = 1.0 @ 30°C, 0.8 @ 55°C amb.