

CURRENT TRANSFORMER

Model 307MR

Window Diameter 4.50"

REGULATORY AGENCY APPROVALS



E93779 LR89403

Manufactured to meet the requirements of ANSI/IEEE C57.12.
Classified by UL in accordance with IEC 44-1

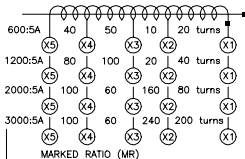
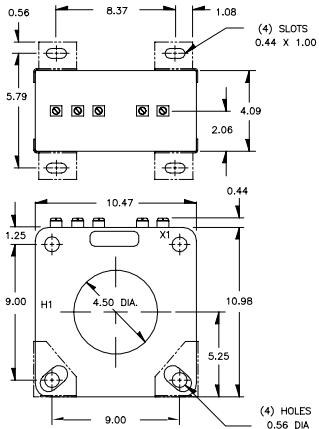
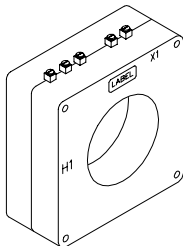
APPLICATION:
Relaying.

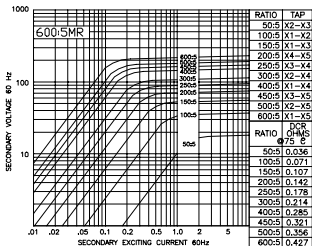
FREQUENCY:
50-400Hz

INSULATION LEVEL:
0.6 kV, BIL 10 kV full wave.

CONTINUOUS THERMAL
CURRENT RATING FACTOR:
See TRF at curves.

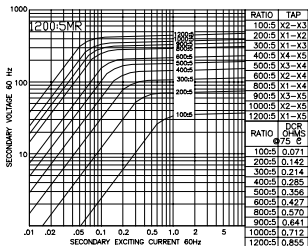
- Terminals are brass No.10-32 with one flatwasher and lockwasher.
- The transformer winding is arranged so that the turns are fully distributed between all taps.
- Order Mounting Bracket Kit No. 0221B01525 separately.
- Approximate weight 53 lbs.





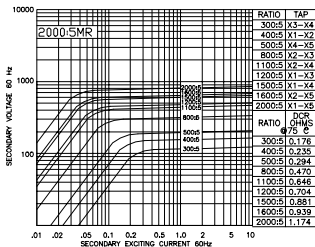
Model 307-601MR - rating C200

TRF = 2.0 @ 30°C, 1.5 @ 55°C amb.



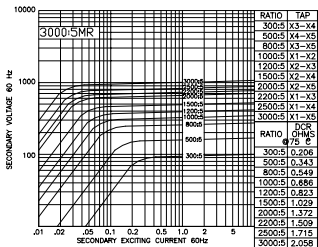
Model 307-122MR - rating C400

TRF = 1.5 @ 30°C, 1.33 @ 55°C amb.



Model 307-202MR - rating C800

TRF = 1.33 @ 30°C, 1.0 @ 55°C amb.



Model 307-302MR - rating C800

TRF = 1.0 @ 30°C, 0.8 @ 55°C amb.