

CURRENT TRANSFORMER

Model CTW5-L-110

Model CTWH5-L-110

Wound primary CT

REGULATORY AGENCY APPROVALS



E145172



LRB9403

Manufactured to meet the requirements of ANSI/IEEE C57.13.
Classified by UL, in accordance with IEC 44-1

APPLICATION:
Metering and relaying.

FREQUENCY:
50-400 Hz.

MAXIMUM SYSTEM VOLTAGE:

15.5kV, BIL 110kV full wave.

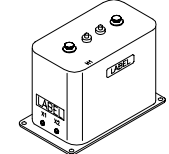
CONTINUOUS THERMAL

CURRENT RATING FACTOR:

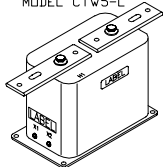
1.00 at 30°C. amb., 0.85 at

55°C. amb.

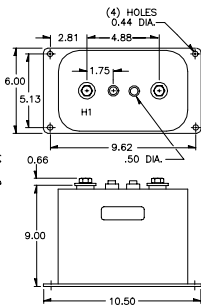
- Primary terminals are 1/2-13 bolts with one Belleville washer.
- Secondary terminals are brass screws No. 10-32 with one flatwasher and lockwasher.
- Vacuum cast in polyurethane resin.
- Other ratios, secondary currents and dual ratios are available. Refer to factory.
- The transformers are tested for partial discharge to Canadian Standards CAN3-C13-M83. This test can also be carried out to IEC requirements if requested.
- Approximate weight 34 lbs.



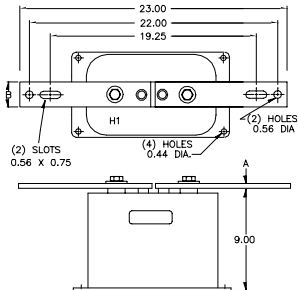
WITHOUT PRIMARY BARS
MODEL CTW5-L



WITH PRIMARY BARS
MODEL CTWH5-L



WITHOUT PRIMARY BARS



PRIMARY CURRENT	DIMENSIONS	
	A	B
5 TO 200A	0.25	1.50
300 TO 600A	0.38	2.00

WITH PRIMARY BARS

CAUTION: Use only the Belleville washers supplied. Tighten to between 25 to 30 foot-pounds. DO NOT OVERTIGHTEN.

CATALOG NUMBER *	CURRENT RATIO	RELAY CLASS	ANSI METERING CLASS AT 60 Hz					THERMAL CURRENT RATING 1 SECOND RMS AMPS
			B0.1	B0.2	B0.5	B0.9	B1.8	
CTW5-L-110-T20-050	5:5	T20	0.3	0.3	0.6	1.2	2.4	375
CTW5-L-110-T20-100	10:5	T20	0.3	0.3	0.6	1.2	2.4	590
CTW5-L-110-T20-150	15:5	T20	0.3	0.3	0.6	1.2	2.4	1200
CTW5-L-110-T20-250	25:5	T20	0.3	0.3	0.6	1.2	2.4	1700
CTW5-L-110-T20-300	30:5	T20	0.3	0.3	0.6	1.2	2.4	1700
CTW5-L-110-T20-400	40:5	T20	0.3	0.3	0.6	1.2	2.4	2400
CTW5-L-110-T20-500	50:5	T20	0.3	0.3	0.6	1.2	2.4	4715
CTW5-L-110-T25-750	75:5	T25	0.3	0.3	0.6	1.2	2.4	4715
CTW5-L-110-T25-101	100:5	T25	0.3	0.3	0.6	1.2	2.4	8625
CTW5-L-110-T25-151	150:5	T25	0.3	0.3	0.6	1.2	2.4	11500
CTW5-L-110-T30-201	200:5	T30	0.3	0.3	0.6	1.2	2.4	11500
CTW5-L-110-T20-251	250:5	T20	0.3	0.3	0.6	1.2	2.4	21700
CTW5-L-110-T25-301	300:5	T25	0.3	0.3	0.6	1.2	2.4	21700
CTW5-L-110-T30-401	400:5	T30	0.3	0.3	0.6	1.2	2.4	44700
CTW5-L-110-T35-501	500:5	T35	0.3	0.3	0.3	0.6	1.2	44700
CTW5-L-110-T40-601	600:5	T40	0.3	0.3	0.3	0.6	1.2	44700

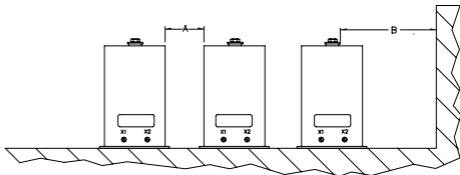
*For ordering with primary bars, change model number to CTWH5-L.
A test card is provided with each unit.

CTWH5-L-110

RECOMMENDED MINIMUM SPACINGS

A; Unit to Unit
= 2.00" minimum.

B; HV to Ground in Air
= 6.50" minimum.



Recommended spacings are for guidance only. User needs to set appropriate values to assure performance for high potential test, impulse test, high humidity, partial discharge, high altitude, and other considerations like configuration.

