

# CURRENT TRANSFORMER

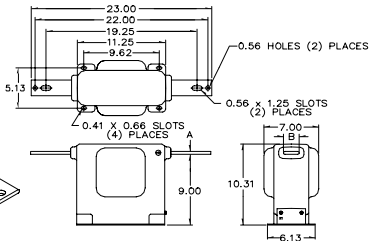
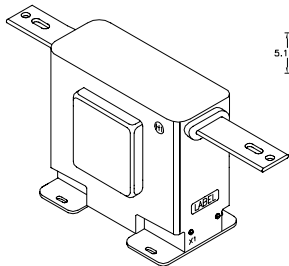
Model  
CTWH5-B-110-T200\*\*  
Wound primary CT



Manufactured to meet the requirements of ANSI/IEEE C57.13.  
Classified by UL, in accordance with IEC 54-1  
Approved for revenue metering by Industry Canada, AE-0640 Rev.01(V)

APPLICATION:  
Metering and relaying.  
FREQUENCY:  
50-400 Hz.  
MAXIMUM SYSTEM VOLTAGE:  
15.5kV, BIL 110kV full wave.  
CONTINUOUS THERMAL  
CURRENT RATING FACTOR:  
5:5 thru 600:5 -  
1.50 at 30°C. amb., 1.33 at 55°C.  
amb.  
800:5 and over -  
1.0 at 30°C. amb., 0.8 at 55°C. amb.

- Primary terminals are plated copper bars. See chart below for sizes.
- Secondary terminals are brass screws No. 10-32 with one flatwasher and lockwasher.
- Vacuum cast in polyurethane resin.
- Other ratios, secondary currents and dual ratios are available. Refer to factory.
- The transformers are tested for partial discharge to Canadian Standards CAN3-C13-M83. This test can also be carried out to IEC requirements if requested.
- Approximate weight 76 lbs.



### BAR SIZE

PRIMARY CURRENT	DIMENSION	
	A	B
5 TO 200A	0.25	1.50
300 TO 1200A	0.38	2.00

CATALOG NUMBER **	CURRENT RATIO	RELAY CLASS	ANSI METERING CLASS AT 60 Hz						***THERMAL CURRENT RATING SECOND RMS AMPS
			B0.1	B0.2	B0.5	B0.9	B1.8		
CTWH5-B-110-T200-050	5:5	T200	0.3	0.3	0.3	0.3	0.3	470	
CTWH5-B-110-T200-100	* 10:5	T200	0.3	0.3	0.3	0.3	0.3	950	
CTWH5-B-110-T200-150	* 15:5	T200	0.3	0.3	0.3	0.3	0.3	1440	
CTWH5-B-110-T200-200	* 20:5	T200	0.3	0.3	0.3	0.3	0.3	1840	
CTWH5-B-110-T200-250	* 25:5	T200	0.3	0.3	0.3	0.3	0.3	2670	
CTWH5-B-110-T200-300	* 30:5	T200	0.3	0.3	0.3	0.3	0.3	2920	
CTWH5-B-110-T200-400	* 40:5	T200	0.3	0.3	0.3	0.3	0.3	3700	
CTWH5-B-110-T200-500	* 50:5	T200	0.3	0.3	0.3	0.3	0.3	4700	
CTWH5-B-110-T200-750	* 75:5	T200	0.3	0.3	0.3	0.3	0.3	7575	
CTWH5-B-110-T200-101	* 100:5	T200	0.3	0.3	0.3	0.3	0.3	12940	
CTWH5-B-110-T200-151	* 150:5	T200	0.3	0.3	0.3	0.3	0.3	14375	
CTWH5-B-110-T200-201	* 200:5	T200	0.3	0.3	0.3	0.3	0.3	25875	
CTWH5-B-110-T200-301	* 300:5	T200	0.3	0.3	0.3	0.3	0.3	27520	
CTWH5-B-110-T200-401	* 400:5	T200	0.3	0.3	0.3	0.3	0.3	40350	
CTWH5-B-110-T200-601	* 600:5	T200	0.3	0.3	0.3	0.3	0.3	66225	
CTWH5-B-110-T200-801	* 800:5	T200	0.3	0.3	0.3	0.3	0.3	66225	
CTWH5-B-110-T200-102	*1000:5	T200	0.3	0.3	0.3	0.3	0.3	66225	
CTWH5-B-110-T200-122	*1200:5	T200	0.3	0.3	0.3	0.3	0.3	66225	

\* Industry Canada App.# AE-0640 Rev. 01

\*\* Replaces Model CTWH5-110-T200. A test card is provided with each unit.

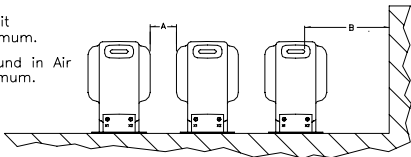
\*\*\* With a burden of 0.35 Ohms or greater connected to the secondary.

# CTWH5-B-110-T200

## RECOMMENDED MINIMUM SPACINGS

A; Unit to Unit  
= 1.50" minimum.

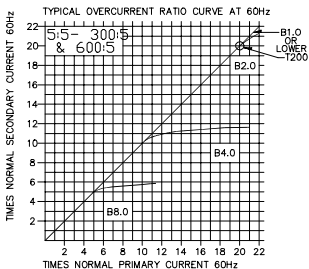
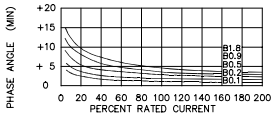
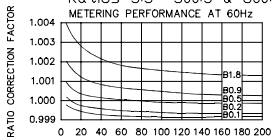
B; HV to Ground in Air  
= 6.50" minimum.



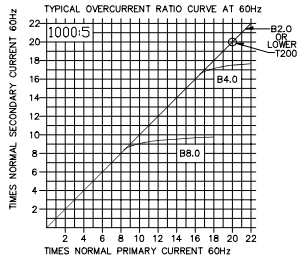
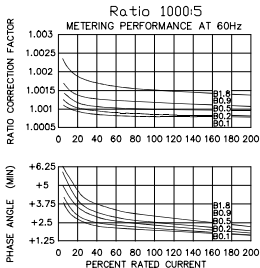
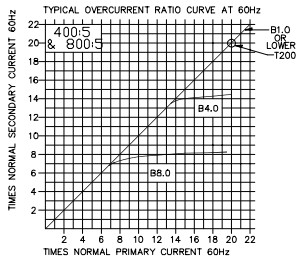
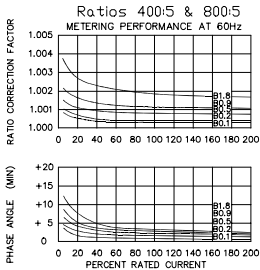
Recommended spacings are for guidance only. User needs to set appropriate values to assure performance for high potential test, impulse test, high humidity, partial discharge, high altitude, and other considerations like configuration.

Ratios 5:5 -300:5 & 600:5

METERING PERFORMANCE AT 60Hz



# CTWH5-B-110-T200



# CTWH5-B-110-T200

