

# CURRENT TRANSFORMER

Model CTW3-60-T50

Model CTWH3-60-T50

*Wound primary CT*

REGULATORY AGENCY APPROVALS



Manufactured to meet the requirements of ANSI/IEEE C57.13.  
Classified by UL in accordance with IEC 44-1

APPLICATION:  
Metering and relaying.

FREQUENCY:  
50-400 Hz.

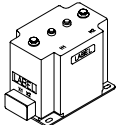
MAXIMUM SYSTEM VOLTAGE:  
5.6kV, BIL 60kV full wave.

CONTINUOUS THERMAL  
CURRENT RATING FACTOR:  
1.50 at 30°C amb., 1.33 at 55°C amb.

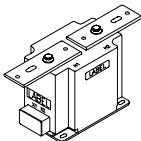
150:5 and 600:5—  
1.33 at 30°C amb., 1.00 at 55°C amb.

250:5—  
1.00 at 30°C amb., 0.85 at 55°C amb.

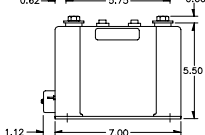
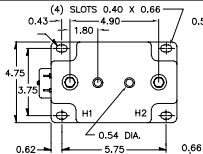
- Primary terminals are 1/2-13 bolts with one Belleville washer.
- Secondary terminals are brass studs No. 10-32 with one flatwasher, lockwasher and regular nut.
- Supplied with short circuiting secondary terminal cover.
- Vacuum cast in polyurethane resin.
- Other ratios, secondary currents and dual ratios are available. Refer to factory.
- The transformers are tested for partial discharge to Canadian Standards CAN3-C13-M83. This test can also be carried out to IEC requirements if requested.
- Approximate weight 20 lbs.



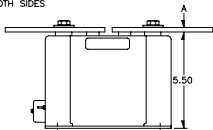
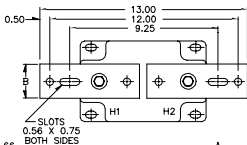
MODEL CTW3  
WITHOUT PRIMARY BARS



MODEL CTWH3  
WITH PRIMARY BARS



WITHOUT PRIMARY BARS



BAR SIZES		
PRIMARY CURRENT	A	B
5 TO 150A	0.19	1.50
200 TO 600A	0.25	2.00

WITH PRIMARY BARS

CAUTION: Use only the Belleville washers supplied. Tighten to between 25 to 30 foot-pounds. DO NOT OVERTIGHTEN.

CATALOG NUMBER*	CURRENT RATIO	RELAY CLASS	ANSI METERING CLASS AT 60 Hz					**THERMAL CURRENT RATING 1 SECOND RMS AMPS
			B0.1	B0.2	B0.5	B0.9	B1.8	
CTW3-60-T50-050	5:5	T50	0.3	0.3	0.3	0.6	1.2	375
CTW3-60-T50-100	10:5	T50	0.3	0.3	0.3	0.6	1.2	1000
CTW3-60-T50-150	15:5	T50	0.3	0.3	0.3	0.6	1.2	1690
CTW3-60-T50-200	20:5	T50	0.3	0.3	0.3	0.6	1.2	1900
CTW3-60-T50-250	25:5	T50	0.3	0.3	0.3	0.6	1.2	2700
CTW3-60-T50-300	30:5	T50	0.3	0.3	0.3	0.6	1.2	2700
CTW3-60-T50-400	40:5	T50	0.3	0.3	0.3	0.6	1.2	4720
CTW3-60-T50-500	50:5	T50	0.3	0.3	0.3	0.6	1.2	4720
CTW3-60-T50-750	75:5	T50	0.3	0.3	0.3	0.6	1.2	8630
CTW3-60-T50-101	100:5	T50	0.3	0.3	0.3	0.6	1.2	8630
CTW3-60-T50-151	150:5	T50	0.3	0.3	0.3	0.6	1.2	14380
CTW3-60-T50-201	200:5	T50	0.3	0.3	0.3	0.6	1.2	17250
CTW3-60-T50-251	250:5	T50	0.3	0.3	0.3	0.6	1.2	17250
CTW3-60-T50-301	300:5	T50	0.3	0.3	0.3	0.6	1.2	37800
CTW3-60-T50-401	400:5	T50	0.3	0.3	0.3	0.6	1.2	37800
CTW3-60-T50-501	500:5	T50	0.3	0.3	0.3	0.6	1.2	37800
CTW3-60-T50-601	600:5	T50	0.3	0.3	0.3	0.6	1.2	37800

\*For ordering with primary bars, change model number to CTWH3.

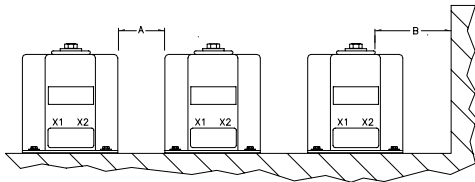
\*\*With a burden of B0.1 or greater connected to the secondary.

# CTW3-60-T50

## RECOMMENDED MINIMUM SPACINGS

A; Unit to Unit  
= 0.75" minimum.

B; HV to Ground in Air  
= 3.00" minimum.



Recommended spacings are for guidance only. User needs to set appropriate values to assure performance for high potential test, impulse test, high humidity, partial discharge, high altitude, and other considerations like configuration.

