

CURRENT TRANSFORMER

Model CTWH3-60-T100

Wound primary CT

REGULATORY AGENCY APPROVALS



Manufactured to meet the requirements of ANSI/IEEE C57.13.
 Certified by UL to conform with IEC 61871.
 Approved for common marking by Industry Canada, #1-2028 (Rev.2/01)

APPLICATION:
 Metering and relaying.

FREQUENCY:

50-400 Hz.

MAXIMUM SYSTEM VOLTAGE:

5.5kV, 5kV, 60kV full wave.

CONTINUOUS THERMAL

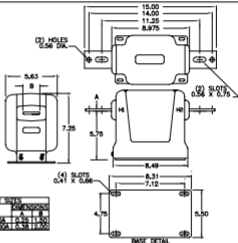
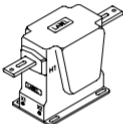
CURRENT RATING FACTOR:

1.50 at 30°C amb., 1.33 at 55°C amb.

250:5, 1000:5 and 1200:5-

1.10 at 30°C amb., 0.85 at 55°C amb.

- Primary terminals are plated copper bars. See chart below for sizes.
- Secondary terminals are brass sizes No. 10-32 with one flatswisher and lockwasher.
- Vacuum cast in polyurethane resin.
- Other ratios, secondary currents and dual ratios are available. Refer to factory.
- The transformers are tested for partial discharge to Canadian Standards CAN3-C13-M63. This test can also be carried out to IEC requirements if requested.
- Approximate weight 41 lbs.



BAR SIZES		
PRIMARY CURRENT	A	B
0 TO 250A	0.36	1.50
300 TO 1200A	0.58	2.00

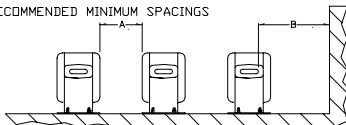
CATALOG NUMBER	CURRENT RATIO	RELAY CLASS	ANSI METERING CLASS AT 60 Hz					**THERMAL CURRENT RATING 1 SECOND RMS AMPS
			BO.1	BO.2	BO.5	BO.9	BT.5	
CTWH3-60-T100-050	5:5	T100	0.3	0.3	0.3	0.3	0.3	470
CTWH3-60-T100-100	* 10:5	T100	0.3	0.3	0.3	0.3	0.3	900
CTWH3-60-T100-150	* 15:5	T100	0.3	0.3	0.3	0.3	0.3	1600
CTWH3-60-T100-200	* 20:5	T100	0.3	0.3	0.3	0.3	0.3	1900
CTWH3-60-T100-250	* 25:5	T100	0.3	0.3	0.3	0.3	0.3	2600
CTWH3-60-T100-300	* 30:5	T100	0.3	0.3	0.3	0.3	0.3	2900
CTWH3-60-T100-400	* 40:5	T100	0.3	0.3	0.3	0.3	0.3	3800
CTWH3-60-T100-500	* 50:5	T100	0.3	0.3	0.3	0.3	0.3	4700
CTWH3-60-T100-750	* 75:5	T100	0.3	0.3	0.3	0.3	0.3	5900
CTWH3-60-T100-101	* 100:5	T100	0.3	0.3	0.3	0.3	0.3	8600
CTWH3-60-T100-151	* 150:5	T100	0.3	0.3	0.3	0.3	0.3	12900
CTWH3-60-T100-201	* 200:5	T100	0.3	0.3	0.3	0.3	0.3	17200
CTWH3-60-T100-251	* 250:5	T100	0.3	0.3	0.3	0.3	0.3	17200
CTWH3-60-T100-301	* 300:5	T100	0.3	0.3	0.3	0.3	0.3	34500
CTWH3-60-T100-401	* 400:5	T100	0.3	0.3	0.3	0.3	0.3	34500
CTWH3-60-T100-601	* 600:5	T100	0.3	0.3	0.3	0.3	0.3	66200
CTWH3-60-T100-801	* 800:5	T100	0.3	0.3	0.3	0.3	0.3	66200
CTWH3-60-T100-102	* 1000:5	T100	0.3	0.3	0.3	0.3	0.3	66200
CTWH3-60-T100-122	* 1200:5	T100	0.3	0.3	0.3	0.3	0.3	66200

**With a burden of BO.1 or greater connected to the secondary.

CTWH3-60-T100

RECOMMENDED MINIMUM SPACINGS

- A; Unit to Unit
 = 0.75" minimum.
- B; HV to Ground in Air
 = 3.00" minimum.



Recommended spacings are for guidance only. User needs to set appropriate values to assure performance for high potential test, impulse test, high humidity, partial discharge, high altitude, and other considerations like configuration.

