

# CURRENT TRANSFORMER

Model 3P5

Window Diameter 1.56"

**APPLICATION:**  
3 phase metering and other switchboard applications.

**FREQUENCY:**  
50-400 Hz.

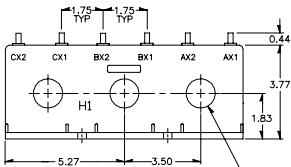
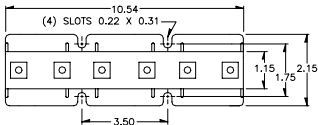
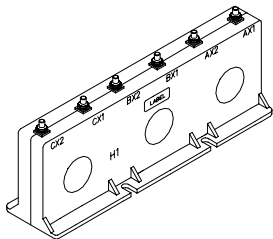
**INSULATION LEVEL:**  
600 Volt, 10 kV BIL full wave.

REGULATORY AGENCY APPROVALS



Manufactured to meet the requirements of ANSI/IEEE C57.13.  
Classified by U.L. in accordance with IEC 44-1

- Terminals are brass studs No. 8-32 with one flatwasher, lockwasher and regular nut.
- Transformers can be ordered with secondary leads configured in various ways (consult factory).
- Approximate weight 3.0 lbs.



(3) 1.56 DIA. WINDOWS

CATALOG NUMBER	CURRENT RATIO	ANSI METERING CLASS AT 60 Hz					SECONDARY WINDING RESISTANCE (OHMS @ 75°C.)
		B0.1	B0.2	B0.5	B0.9	B1.8	
3P5-500	50:5	4.8	-	-	-	-	0.009
3P5-750	75:5	2.4	4.8	-	-	-	0.010
3P5-101	100:5	1.2	2.4	-	-	-	0.012
3P5-151	150:5	0.6	1.2	2.4	4.8	-	0.019
3P5-201	200:5	0.6	0.6	1.2	2.4	4.8	0.024
3P5-251	250:5	0.3	0.3	1.2	2.4	2.4	0.033
3P5-301	300:5	0.3	0.3	0.6	1.2	2.4	0.040
3P5-401	400:5	0.3	0.3	0.6	1.2	1.2	0.091
3P5-501	500:5	0.3	0.3	0.6	0.6	1.2	0.105
3P5-601	600:5	0.3	0.3	0.6	0.6	1.2	0.158
3P5-751	750:5	0.3	0.3	0.6	0.6	0.6	0.147
3P5-801	800:5	0.3	0.3	0.6	0.6	0.6	0.156
3P5-102	1000:5	0.3	0.3	0.3	0.3	0.6	0.196
3P5-122	1200:5	0.3	0.3	0.3	0.3	0.6	0.291